



Experience of European regions with SCIROCCO on-line tool

Online: www.sciocco-project.eu

Twitter: [SCIROCCO_EU](https://twitter.com/SCIROCCO_EU)

From a conceptual Maturity Model to an online tool

The Maturity Model and its on-line self-assessment tool are helping regions to identify:

- The context requirements of a good practice considered for adoption;
- The level of maturity of the health and social care system for integrated care.



The many activities that need to be managed in order to deliver integrated care have been grouped into 12 dimensions, each of which addresses part of the overall effort. A country or a region can consider each dimension, assess the current situation, and allocate a measure of maturity within that domain. As a result, a radar diagram will be developed which reveals areas of strengths and also gaps in capability.

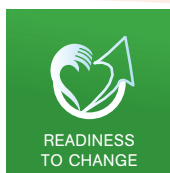
You can access SCIROCCO online tool here
<http://scirocco-projectmsa.inf.ed.ac.uk>

How to use SCIROCCO on-line self-assessment tool?

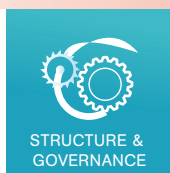
SCIROCCO tool is tested with multidisciplinary teams to capture the perceptions of all stakeholders involved in integrated care. The tool facilitates the discussions and negotiations within the teams in order to reach consensus and agreements on the maturity of environment for integrated care.



To learn more about how to use SCIROCCO on-line tool:
<http://www.scirocco-project.eu/maturity-model-in-practice-scirocco-assessment-tool/>



READINESS
TO CHANGE



STRUCTURE &
GOVERNANCE



INFORMATION &
eHEALTH SERVICES



STANDARDISATION
& SIMPLIFICATION

How mature the environment needs to be for Integrated Care?

SCIROCCO online self-assessment tool is being tested to identify the maturity requirements of the good practices. The outcomes of this process help to inform other regions what are the requirements for the transferability of a particular good practice in other health and social care settings across Europe.

SCOTLAND

"SCIROCCO tool has already proven its worth. It has helped facilitate round table discussions on evaluating our understanding of good practice development and also prompted focussed discussion on our perception of progress toward achieving strategic objectives around health and social care integration."

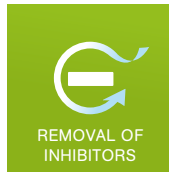


*Ian Mathieson
Coordinator,
Health and Social Care*





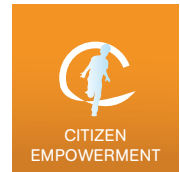
FINANCE &
FUNDING



REMOVAL OF
INHIBITORS



POPULATION
APPROACH



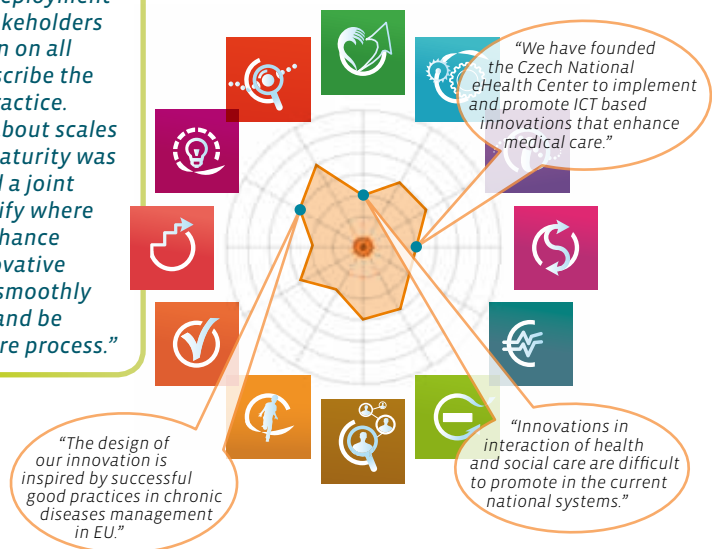
CITIZEN
EMPOWERMENT

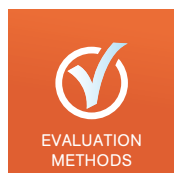
OLOMOUC REGION

"We applied the on-line tool to assess conditions for the good practice we developed to improve care of patients with structural heart disease. This gave us an opportunity to learn more about how we are ready for deployment in the field. Various stakeholders expressed their opinion on all 12 dimensions that describe the environment for the practice. Coming to consensus about scales for each indicator of maturity was not a complex task and a joint meeting helped to clarify where there was a need to enhance conditions for the innovative practice so that it can smoothly operate in our Region and be effective part of the care process."

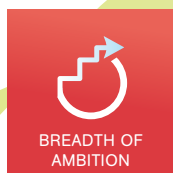


*Prof. Milos Taborsky,
Cardiology
University Hospital
Olomouc*





EVALUATION
METHODS



BREADTH OF
AMBITION



INNOVATION
MANAGEMENT



CAPACITY
BUILDING

How to assess the readiness for integrated care?

SCIROCCO online self-assessment tool is being tested to assess the maturity of health and social care systems for integrated care in Europe. The outcomes of this process inform regions about their readiness for integrated care, including strengths and weaknesses and areas of improvements.

PUGLIA REGION

"The SCIROCCO tool is useful to drive discussions during brainstorming: sometimes in meetings it is easy to miss the focus". It also provides a clear vision of the strengths and weaknesses of the regional context. If used properly, it is an extraordinary participatory policy tool."



Giovanni Gorgoni
CEO, Regional Strategic
Agency
for Health and Social Affairs
(AReSS Puglia)

"The SCIROCCO tool could also be used in the validation of other regional policies, not just related to chronicity."

**Social Welfare
Regional Manager**

Active Citizenship

"The SCIROCCO tool helps us to understand the level maturity of eHealth in our regions. It is also useful as it provides information on the different views of regional stakeholders and for the provider to better understand patient needs."

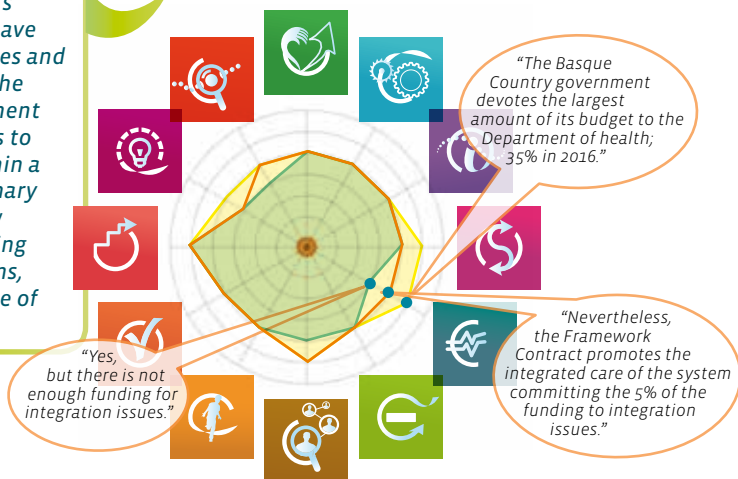


BASQUE COUNTRY

"Aiming for an integrated care system, Osakidetza has moved towards a new organizational and management model. This has meant a cultural change for Osakidetza's professionals, whom have had to assume new roles and face new challenges. The SCIROCCO self-assessment process has allowed us to contrast opinions within a group of multidisciplinary colleagues, and review progresses in integrating health and care systems, making us better aware of where we are."



Rosa González,
Integration and chronicity
service of the General
Directorate of Osakidetza



NORRBOTTEN REGION

"SCIROCCO tool visualised the region's challenges in use of eHealth services. It also explained our internal strengths and weaknesses. We know that we have to use more technology to develop eHealth and eCare. So, the tool can support us to uncover what dimensions need to be developed and improved. The Assessment made it obvious!"



Stefan Carlsson,
IT-Strategist



Facts about SCIROCCO

This two-and-a half year project runs from April 2016 to December 2018. It has a total budget of €2,204,631. The consortium is composed of 11 partners from six European countries.

Project Partners

Belgium

EHTEL - European Health Telematics Association
Vrije Universiteit Brussel

Czech Republic

University Hospital Olomouc

Italy

Regional Healthcare Agency of Puglia

Scotland

NHS 24 (Lead Partner)
University of Edinburgh

Spain

Kronikune – Research Centre on Chronicity
Osakidetza – Health Service of Basque Country
University of Valencia

Sweden

County Council of Norrbotten



Co-funded by
the Health Programme
of the European Union

This leaflet is part of the project 710033 / SCIROCCO which has received funding from the European Union's Health Programme (2014-2020)