



SELF-ASSESSMENT PROCESS IN PUGLIA REGION

GIOVANNI GORGONI
ARESS PUGLIA REGION



Co-funded by
the Health Programme
of the European Union



Puglia Region

- 4,1 millions population
- 40% Chronic patients
- 21% over 65yrs



Southern
Italy

Healthcare System in Puglia

- ▶ In Puglia, the healthcare system is mainly public. There are also private structures that contribute to the delivery of care cooperating formally with the public system so that citizens can access the service undergoing the same rules of the public services. In the last two years, the system is undergoing a complete reorganisation. At the moment, the service is organised as follows:
- ▶ 49 Districts gathered in 6 Local Health Authorities which includes 31 Integrated Health Community centres.
- ▶ 5 second level hospitals (average 825 beds) 16 first level hospitals (average 299 beds) 12 basic hospitals (average 127 beds).
- ▶ The above listed hospitals include 2 Hospital Trusts and 2 Research Hospitals.

Readiness for integrated care in Puglia Region

Our assessment process

- Coordinator of the Project shared the methodology with the Scientific Rep, and managing Director
- Circulated a letter of invitation with supporting material
- 11 stakeholders involved divided between Macro-Meso-Micro level of
 - ❑ **Macro:** Regional Health Programme Manager, Social Programme Manager, ICT/eHealth **Systems Manager**, Research/investment **Funds Manager**
 - ❑ **Meso:** Health Manager LHA, Health Manger, Industry
 - ❑ **Micro:** Specialist, General Practitioner, Citizens Rep, Researcher

Integrated Care in Puglia Region

Some examples of individual assessment:

Regional Programme Manager (left) and Citizen Representative (right)



Integrated Care in Puglia Region

Understanding the concept of integrated care: the assessment outcome

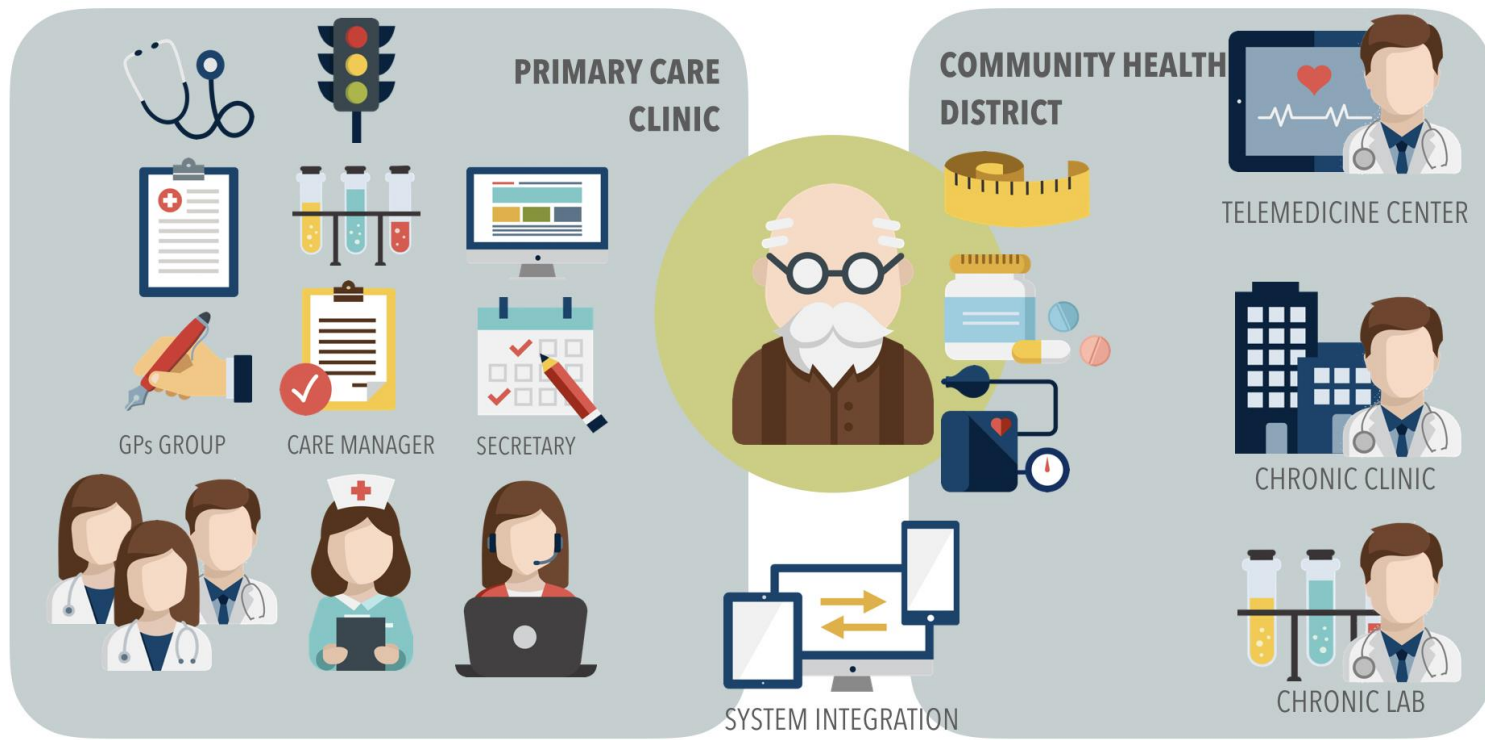


Major strengths include **capacity building, structure and governance, finance and funding**, whereas citizen empowerment seemed to be a weak point.

Puglia context came out to be coherent with the **2 stars level of maturity stated by the EC when awarding Puglia Reference Site in the EIPonAHA**: Governance infrastructure in place, rightly oriented in priorities and funding

Integrated Care in Puglia Region

From assessment outcomes to our next immediate Integrated Care Model: **Care Puglia 3.0**



Integrated Care in Puglia Region










From assessment outcomes to our next immediate Integrated Care Model: **Care Puglia 3.0**

- Sharp patient profiling and stratification by age, disease and risk
- Two organisational pillars: primary care clinic and health community district
- Strong engagement of patient through Individual Care Agreement
- Only for GPs on integrated care unit (no GP alone)
- Nursing Care Manager as “Care pivot”
- Keep patient at his own GP as much as possible through basic diagnostics on telemedicine
- Care providing only by pathways shared and updated
- Capitation fee for care service and for tech tools

Integrated Care in Puglia Region

Our integrated care model: Care Puglia 3.0

telemedicine
teleassistance

Diagnostic Routine DIABETES NOT COMPLICATED									
MEETING AND CARE AGREEMENT (SHARE&CHECK)	agrees	leads & proposes	supports	books					twice a year
LIFESTYLES & CLINICAL ADHERENCE	self-monitors	leads	supports						twice a year
BMI & ABDOMEN CIRCUMFERENCE	self-monitors	leads	supports						twice a year
BLOOD PRESSURE	self-monitors	leads	supports						twice a year
GLYCATED HEMOGLOBIN		evaluates & decides	executes withdrawal	books	analyzes sample		reports		twice a year
CREATININE		evaluates & decides	executes withdrawal	books	analyzes sample		reports		twice a year
CALCULATED CLEARANCE		evaluates & decides	executes withdrawal	books	analyzes sample		reports		twice a year
GLYCEMIA		evaluates & decides	executes withdrawal	books	analyzes sample		reports		twice a year
POSTPRANDIAL GLYCEMIA	self-monitors	evaluates & decides							twice a year
FULL URINE EXAM		evaluates & decides	executes withdrawal	books	analyzes sample		reports		twice a year
MICROALBUMINURIA		evaluates & decides	executes withdrawal	books	analyzes sample		reports		once a year
LIPID PROFILE		evaluates & decides	executes withdrawal	books	analyzes sample		reports		once a year
FOOT EXAMINATION	self-monitors	leads	supports						once a year
ECG		evaluates & decides	executes test	books		reports			once a year
OCULAR FUNDUS EXAMINATION		evaluates & decides	executes test	books			reports		once every two years



THANK YOU!



Co-funded by
the Health Programme
of the European Union



@ SCIROCCO_EU